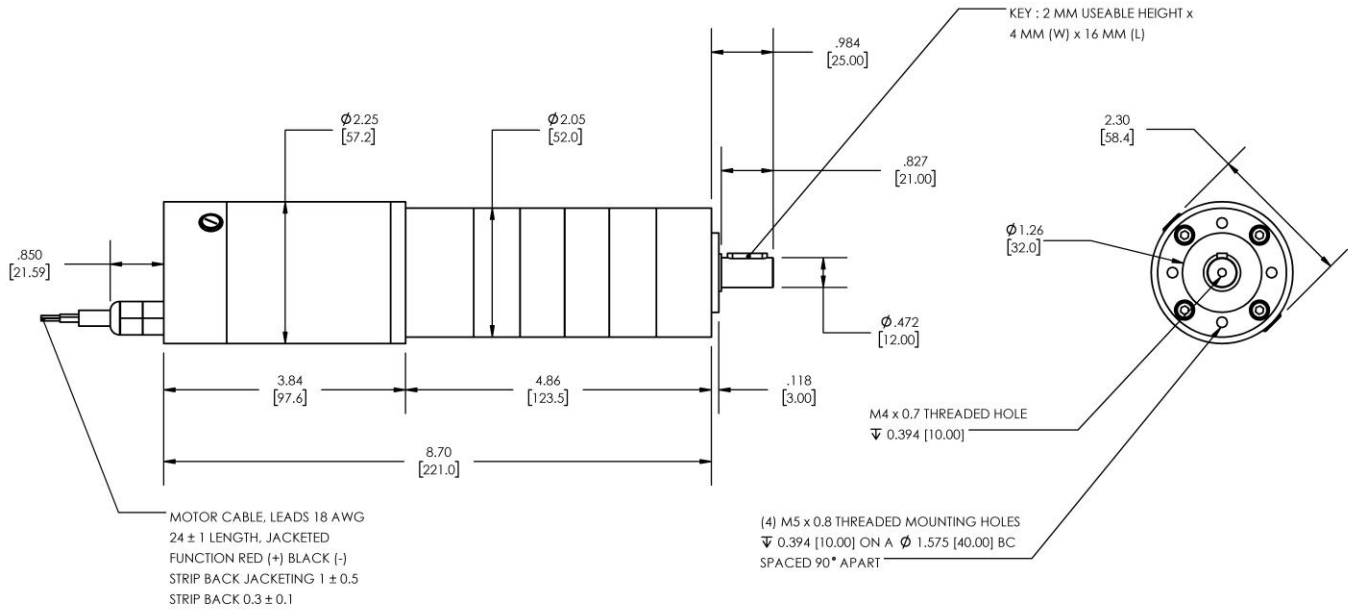


Model Number:
MMP TM57-90V GP52-777


PLANETARY GEARMOTOR OUTPUT PARAMETERS:	VALUE	UNITS	TOLERANCE
Gearhead Ratio (exact)	776.76 : 1		
Gearhead Shaft Output Speed (at full-load)	5.7	RPM	MAX
Gearmotor Rated Continuous Torque	442	In-Lbs	MAX
Gearmotor Rated Peak Torque	443++	In-Lbs	----
Gearhead Standard Backlash	51	Arc Minutes	MAX
Gearhead Efficiency	65%	----	----
Output Shaft Radial Load Capacity	113	Lbs	MAX
Output Shaft Axial Load Capacity	45	Lbs	MAX
Gearmotor Total Weight	4.7	Lbs	MAX

++ All Peak Torque values are dependent upon duty. Contact our sales office for details.

DC MOTOR PERFORMANCE PARAMETERS:	VALUE	UNITS	TOLERANCE
Rated DC Voltage	90	DC VOLTS	----
Rated Continuous Current	0.75	AMPERES	----
No-Load Speed	5000	RPM	MAX
Rated Speed	4412	RPM	+/- 15%
Rated Continuous Power Out	46	WATTS	+/- 15%
Rated Continuous Torque	14	OZ-IN	----
Peak Torque (motor only)	103	OZ-IN	----
No-Load Current	0.17	AMPERES	MAX
Back EMF Constant (Ke)	18.0	V/KRPM	+/- 10%
Torque Constant (Kt)	24.3	OZ-IN/AMP	+/- 10%
DC Armature Resistance	14.20	OHMS	+/- 15%
Armature Inductance	18.32	mH	+/- 15%
Armature temperature	155	DEG. C	MAX

NOTES:

- ENCODER & BRAKE OPTIONS AVAILABLE – [FOLLOW THIS LINK FOR DETAILS](#)
- NEMA MOUNTING FLANGE OPTION AVAILABLE – [FOLLOW THIS LINK FOR DETAILS](#)

MIDWEST MOTION PRODUCTS

DESIGN, MANUFACTURING & DISTRIBUTION - MOTION CONTROL EQUIPMENT

www.midwestmotion.com

email: sales@midwestmotion.com